



ARE YOU ME?

Finding the matches between adult aquatic animals and their juvenile counterparts



GRADE K

MATERIALS

- cardboard
- scissors
- glue

KEY WORDS

- adult
- young
- juvenile
- metamorphosis

STANDARD

- SCI.K.3

OBJECTIVE

- Students will be able to recognize various juvenile stages of aquatic animals and match them with corresponding adult stages.

BACKGROUND INFORMATION

- Many animals look significantly different in their earliest stages of life than they do in adulthood.
- Many aquatic insects undergo metamorphosis, which is a change during growth.

PROCEDURE

- Cut out the pictures on attached pages and glue them onto cardboard pieces to create cards.
- Introduce the aquatic animal cards and divide the class into two groups.
- Designate one group to be the adult group and the other to be the young animal group.
- Give each of the students a card from their respective group.
- Instruct the students to look for their “match” and pair the appropriate adult and juvenile forms.

RECOMMENDED ASSESSMENT

- Make sure that all of the students have found their correct match.
- Have the students look at their cards and find similarities and differences in how different kinds of aquatic animals grow and change.

EXTENSIONS

- Have students find out as much as possible about some of the habitats in which these animals live. If possible, visit some of the habitats where the animals are actually found.
- Pick a pair of images and find out more about the life cycles of each of the animals shown.

TEACHER HINTS

- Be sure to hold onto a copy of the pages that reveal the answers.



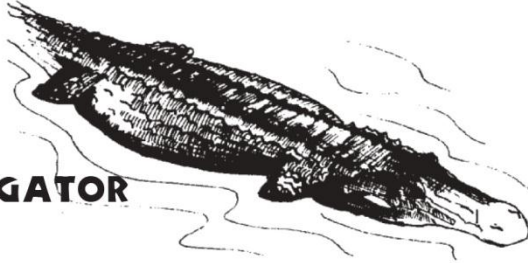


ARE YOU ME?



Name _____

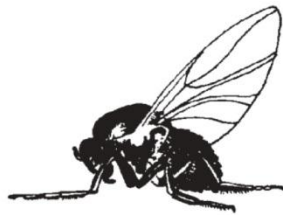
ALLIGATOR



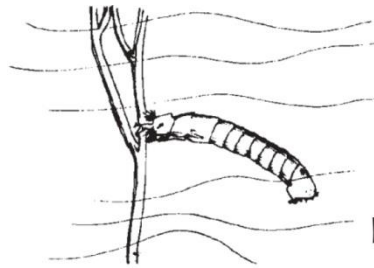
ALLIGATOR HATCHLINGS



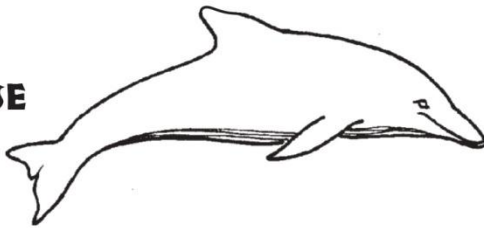
BLACK FLY



BLACK FLY LARVA



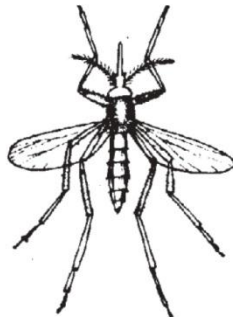
PORPOISE



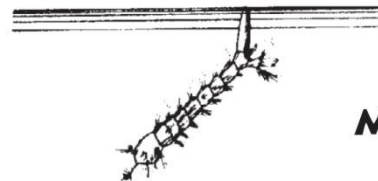
YOUNG PORPOISE



MOSQUITO



MOSQUITO LARVA



ADULT BEAVER



YOUNG BEAVERS



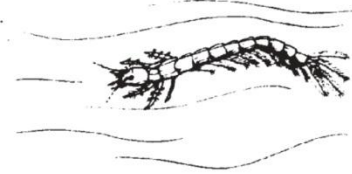


ARE YOU ME?



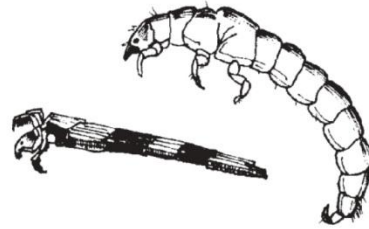
Name _____

**WHIRLIGIG
BEETLE**



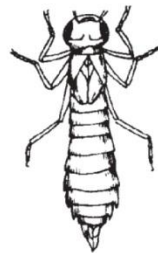
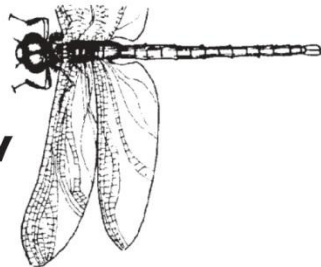
**WHIRLIGIG
LARVA**

CADDISFLY



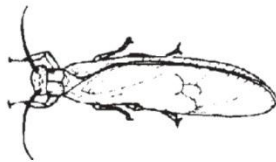
**CADDISFLY
LARVA**

DRAGONFLY



**DRAGONFLY
NYMPH**

STONEFLY



**STONEFLY
NYMPH**

OSPREY



**OSPREY
HATCHLINGS**



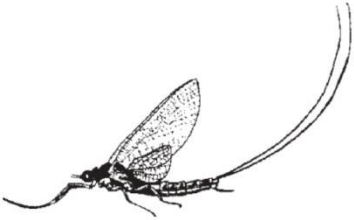


ARE YOU ME?



Name _____

MAYFLY



**MAYFLY
NYMPH**



PELICAN



**PELICAN NEST
AND EGGS**



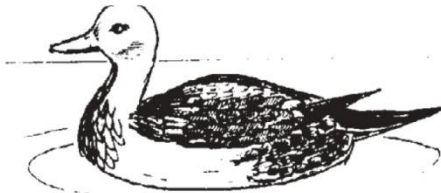
BUTTERFLY



**BUTTERFLY
LARVA**



DUCK



DUCKLINGS



FROG



TADPOLES

